

ALUS 101

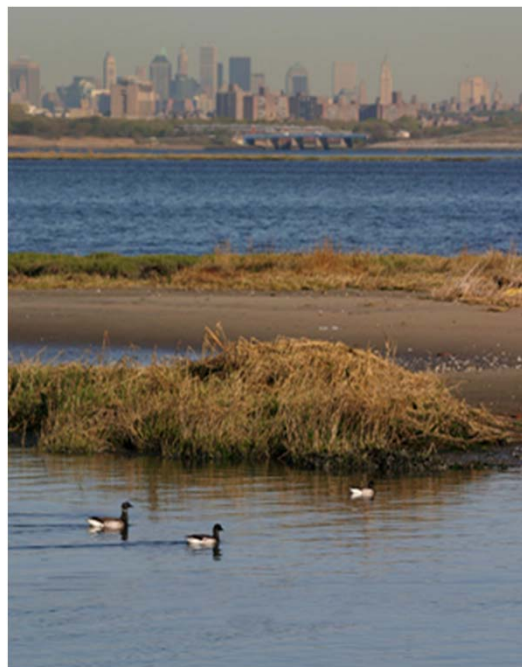
MacKenzie County Committee of the Whole

Presented by Christine Campbell, Western Hub Manager, ALUS Canada

August 23, 2016 MacKenzie County, Alberta



New York City



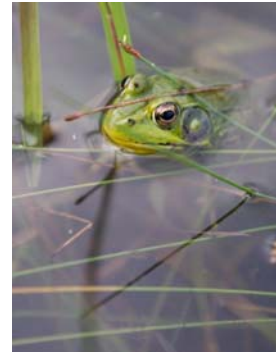
\$8 Billion

\$1.5 Billion

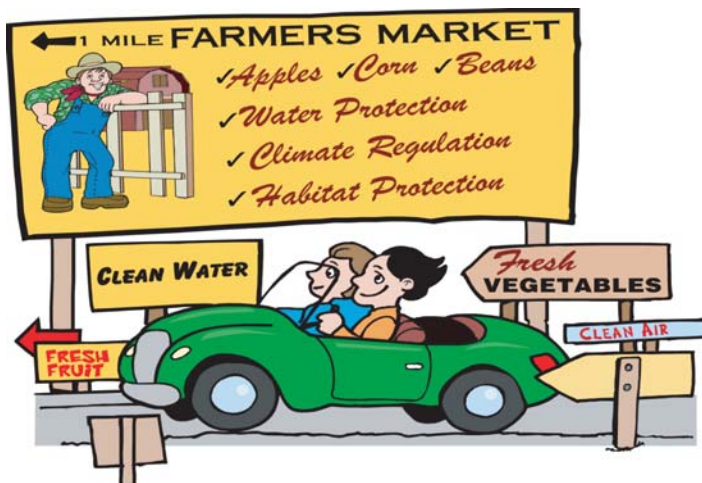


ECOSYSTEM SERVICES

- Riparian Buffers
- Erosion Control
- Water Purification
- Habitat Creation
- Pollinator Habitat
- Windbreak/Shelterbelt
- Soil Amendment
- Wildlife Corridors
- Water Control
- Sediment Capture
- Water Retention
- Flood Control
- Carbon Sequestration
- Biodiversity Enhancement
- Air Purification
- The list goes on...



ALUS 101 Refresher



ALUS is a payment-for-ecosystem-services model which allows society to recognize the benefits which are provided by nature because of the stewardship of farmers and ranchers.

Producers are paid for the additional ecosystem services produced because of their management change via cost-shared establishment expenses and **annual payments**.



How do farmers and ranchers deliver ecosystem services?



Best Management Practices

- The farmer or rancher leads the process
- Coordinator works directly with farmer or rancher
- Approved by PAC



SAMPLE PROJECT: RIPARIAN FENCING



BEFORE AND AFTER:



**SAMPLE PROJECT:
DRAINAGE DITCH
REHABILITATION**



**SAMPLE PROJECT:
POLLINATOR HEDGE**



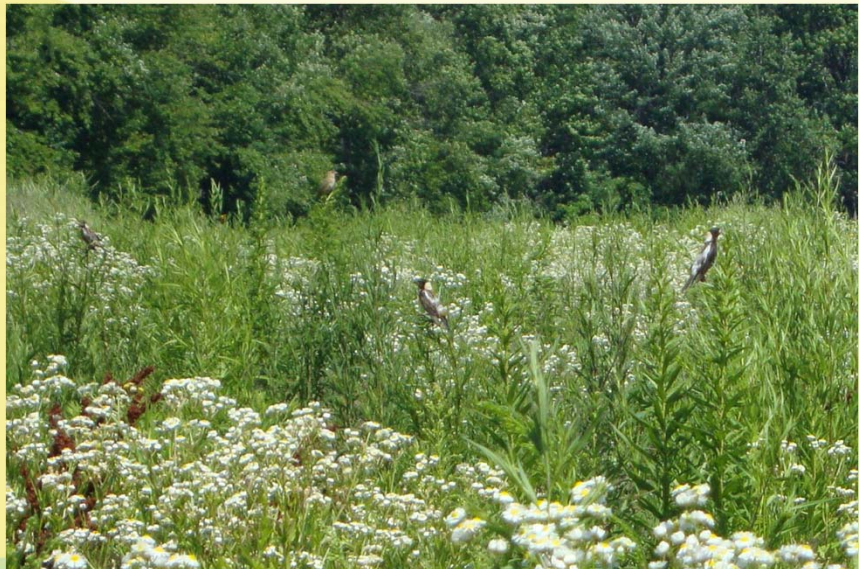
**SAMPLE PROJECT:
NATIVE PRAIRIE
RESTORATION**



**SAMPLE PROJECTS:
WILDLIFE HABITAT
ENHANCEMENTS**



**SAMPLE PROJECTS:
SPECIES-AT-RISK
HABITAT**



SAMPLE PROJECTS: TREE PLANTING



Payment Structure

ESTABLISHMENT COSTS & ANNUAL PAYMENTS



NO RISK

- Participant Agreement – fixed term length with renewal option
- Length is set by the community, usually 5 years
- Funds are allocated from the year of project approval and held in trust.
- Projects are approved based on available funding.
- Suggestion: Set annual payment schedule for producers so it coincides with receipt of all grant funds.



Flexible



Adaptability:
It is not the strongest of the species that survives, nor the most intelligent; it is the one that is most adaptable to change. (Charles Darwin)

WHY ALUS WORKS



Partnership Advisory Committee



Community-Developed

High-Impact



“There’s a spin-off benefit (to ALUS). You start looking at the rest of your land and want to do more.” ~ ALUS participant, Parkland County

THE ALUS PRINCIPLES

- Community-developed
- Farmer-delivered
- Targeted
- Market Driven
- Voluntary
- Integrated
- Accountable
- Science-based



MATERIALS



**ALUS
COOKBOOK
2014-11-24**

ALUS.CA





INCOME	BUDGET Example Year 1	BUDGET Example Year 2	BUDGET Example Year 3
Balance Forward			
Grant Funding		\$25,000.00	\$55,000.00
ALUS Community Contribution (County funds)	\$4,500.00	\$15,000.00	\$15,000.00
etc.			
etc.			
TOTAL INCOME	\$4,500.00	\$40,000.00	\$70,000.00
EXPENSES			
Establishment Costs		\$20,000.00	\$40,000.00
Extension Services (Farmer Liaison)		\$2,000.00	\$2,000.00
Annual Payments		\$7,000.00	\$15,000.00
Per diems (PAC)	\$2,000.00	\$3,000.00	\$3,000.00
Verification:			\$2,000.00
Administration	County In Kind	County In Kind	County In Kind
Staff (Program Coordinator)	County In Kind	County In Kind	County In Kind
Meals & Mileage	County In Kind	County In Kind	County In Kind
Office & Supplies	County In Kind	County In Kind	County In Kind
Communications:	\$500.00	\$1,000.00	\$1,000.00
Equipment:			
Tours & Workshops:	\$2,000.00	\$2,000.00	\$2,000.00
ALUS Program Membership		\$5,000.00	\$5,000.00
TOTAL EXPENSES:	\$4,500.00	\$40,000.00	\$70,000.00

Financial Plan

START-UP BUDGET

- Variable
- Can leverage existing positions
- Expenses and income are highly tied to acreage targets
- Work through detailed example with Hub Manager



DIVERSE FUNDING



THE W. GARFIELD WESTON FOUNDATION



Financial Plan

FUNDING OPTIONS

- In-kind from community
 - Staff, resources & other programs

- Cash investment from community
 - Environmental, agriculture, or planning budget
 - Tax

- ALUS Canada
 - 2016 ONLY:
 - NCP- WETLAND RELATED
 - Weston- unrestricted

- Local grants
 - e.g., ASB Environment Stream
 - e.g., Watershed Resiliency and Restoration Program (WRRP)



THE W. GARFIELD WESTON FOUNDATION



Keys to Success

LEVERAGE EXISTING AGRI-ENVIRONMENTAL PROGRAMMING

- Agricultural Service Board
- Environmental Stream Funding
- Growing Forward 2
- Environmental Farm Plan
- Delta Waterfowl Henhouse Program
- Existing local programs and initiatives

Alberta Agriculture and Forestry

Growing Forward 2 

A federal-provincial-territorial initiative



ASB INTEGRATION - ASB PROGRAM GRANT EXAMPLES FROM RED DEER COUNTY

Goal 5: "To enable producers to be effective stewards of our land, water and natural resources." **ALUS does this.**

Strategy: "Assist producers in adopting riparian area beneficial management practices"

Performance Measure: "Number of Red Deer County producers enrolling in the Red Deer County ALUS initiative"

Performance Measure: "Number of acres enrolled in the Red Deer County ALUS initiative"

Activity: "Deliver the Red Deer County ALUS initiative"



ASB INTEGRATION- DAY TO DAY OPERATIONS EXAMPLES FROM RED DEER COUNTY

ASB Environment Stream-funded person acts as:

- ALUS Program Coordinator
- Conservation Coordinator
- Environmental Farm Plan Technician
- “Rural Extension Staff”

Many ALUS farmers/ranchers access Growing Forward 2 funding to help them establish their ALUS projects.

ALUS producers either have, or will have, up to date Environmental Farm Plans during ALUS contracts.

ALUS producers are invited to attend agro-environmental extension events and activities.

In future, much of the agro-environmental extension will be designed specifically for ALUS producers



Stronger Together

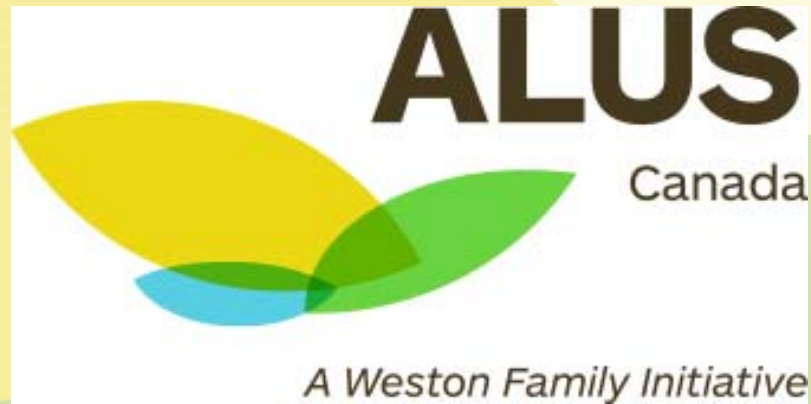
2010

2015

2012

2016

Stronger Together



DO YOU FIT IN ALUS?

Do you have environmental problems to solve?

Are you motivated to find solutions to your environmental problems?

Do you have at least one person in your municipality who is passionate about growing a healthier environment?

Do you want your landowners and residents to take an active role in conservation?

ALUS can help you



STARTING ALUS IN MACKENZIE COUNTY

- Does ALUS fit your community?
- How do we proceed?
 - ALUS 201 Presentation
 - Funding Plan
 - Council Approval
- Timing





THANK YOU

Christine Campbell
Western Hub Manager
587-894-0666
ccampbell@alus.ca

ALUS.CA
@aluscanada



ALUS
Canada

A Weston Family Initiative